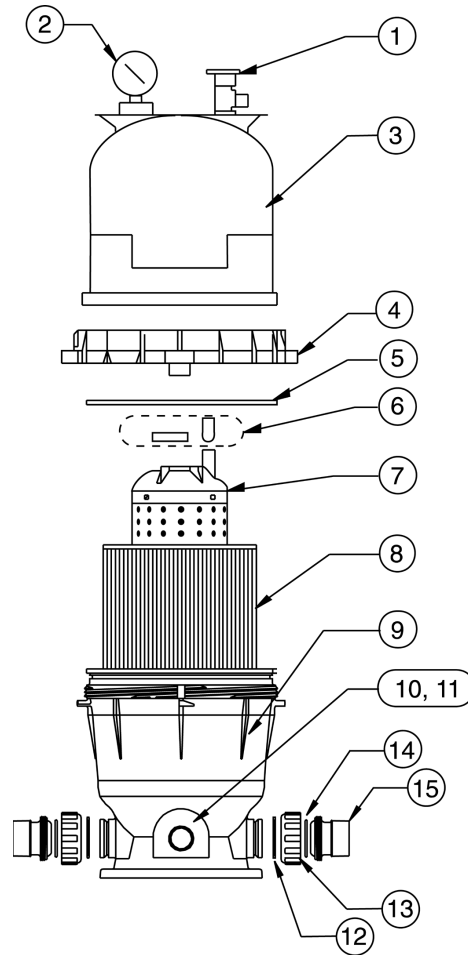


CLEAN & CLEAR® / PREDATOR™ FILTERS

REPLACEMENT PARTS FOR FIBERGLASS REINFORCED POLYPROPYLENE TANK

| Item | Part No. | Description |
|---|----------|---|
| CLEAN & CLEAR / PREDATOR FILTERS | | |
| 1 | 98209800 | High Flow manual air relief valve |
| 2 | 190058 | Gauge, pressure |
| 3 | 178553 | Lid, 50, 100 sq. ft., almond |
| 3 | 178561 | Lid, 75, 150, 200 sq. ft., almond |
| 4 | 59052900 | Locking ring assembly |
| 5 | 87300400 | Body O-ring |
| 6 | 59016200 | Air bleed sock kit |
| 7 | 59053500 | Center core 50 sq. ft. |
| 7 | 59053600 | Center core 75 sq. ft. |
| 7 | 59053700 | Center core 100 sq. ft. |
| 7 | 59053800 | Center core 150, 200 sq. ft. |
| 8 | R173213 | Cartridge element 50 sq. ft. |
| 8 | R173214 | Cartridge element 75 sq. ft. |
| 8 | R173215 | Cartridge element 100 sq. ft. |
| 8 | R173216 | Cartridge element 150 sq. ft. |
| 8 | R173217 | Cartridge element 200 sq. ft. |
| 9 | 178562 | Bottom 50 sq. ft., almond |
| 9 | 178554 | Bottom 75 sq. ft., almond |
| 9 | 178563 | Bottom 100 sq. ft., almond |
| 9 | 178560 | Bottom 150, 200 sq. ft., almond |
| 10 | 51516200 | Drain cap ¹ |
| 10 | 86202000 | Plug, 1-1/2 in. drain, w/ O-ring ² |
| 11 | 86300500 | Drain cap gasket ¹ |
| 11 | 51005000 | O-ring, drain cap ² |
| 12 | 39104500 | Union nut "C" clip |
| 13 | 98212200 | Union nut |
| 14 | 071426 | O-ring, union |
| 15 | 79304600 | Body, swivel |



¹ Used on filters manufactured before 11/98.

² Used on filters manufactured after 11/98.